



# **mth** concertto acusto

[www.concertto.com](http://www.concertto.com)





## mth concertto acusto

**A solution that looks good and  
sounds good**

Methe Oy has developed and patented the innovative MTH Concertto metal façade system. The MTH Concertto product family and its different applications offer new and high-quality material alternatives for buildings' exterior and interior surfaces and ceilings. Combining the best qualities of façade cassettes and profiled sheets, one MTH Concertto product sheet contains several embossed panels in the form of squares or rectangles. In an MTH Concertto façade, there are few cut edges and no straight horizontal surfaces that could collect dirt. The compact entity is durable and extremely rapid to install. The MTH Concertto metal façade combines beautiful appearance and freedom of design with cost-effectiveness, quick installation, and a high-quality result.

MTH Concertto Acusto is a perforated product sheet and part of the MTH Concertto product family. MTH Concertto Acusto is a perforated sheet manufactured from aluminium or steel, and its uses include buildings' interior surfaces and ceilings, as well as different façade sheeting applications. The perforated surface of MTH Concertto Acusto has excellent sound reduction properties, making this a stylish option in interior acoustic design. The materials used, aluminium and steel, are incombustible and very easy to keep clean. Thanks to the use of maintenance-free, lightweight aluminium, MTH Concertto Acusto is a particularly refreshing solution for interior acoustic design. When MTH Concertto Acusto is used for façade sheeting, new types of canopies and sheeting structures can be implemented. MTH Concertto Acusto sheet length can be selected steplessly between the limit values, which adds to the flexibility of the design. In addition, sound-insulation felt can be installed behind MTH Concertto Acusto.

The whole MTH Concertto product family is presented in a separate MTH Concertto product folder, which contains product brochures on different alternatives, design and installation instructions, GDL objects with their instructions for use, and colour samples for standard colours.



The effective width for a MTH Concertto Acusto product sheet is 1,200 mm, and the maximum effective lengths are 3,200 mm for steel and 2,100 mm for aluminium. Available panel widths are 3 x 400 mm and 4 x 300 mm. The length of the panels in one sheet is always the same. The panel length can be chosen steplessly between 300 and 600 mm. The sheets can be installed vertically or horizontally.

**Product types and panel lengths:** MTH Concertto Acusto 3333A  
Panel length 300 mm - 600 mm

MTH Concertto Acusto 444A  
Panel length 300 mm - 600 mm

**Material:** PVDF coated aluminum with colour or different textures (with protective film) or paint, material thickness 1.00 mm or 1.20 mm.

Hot-dip galvanized steel sheet with PVDF coating (with protective film) or paint, material thickness 0.70 mm or 1.00 mm.

**Perforation:** Hole diameter 3 mm, perforation ratio 30% (Ø3/30%)

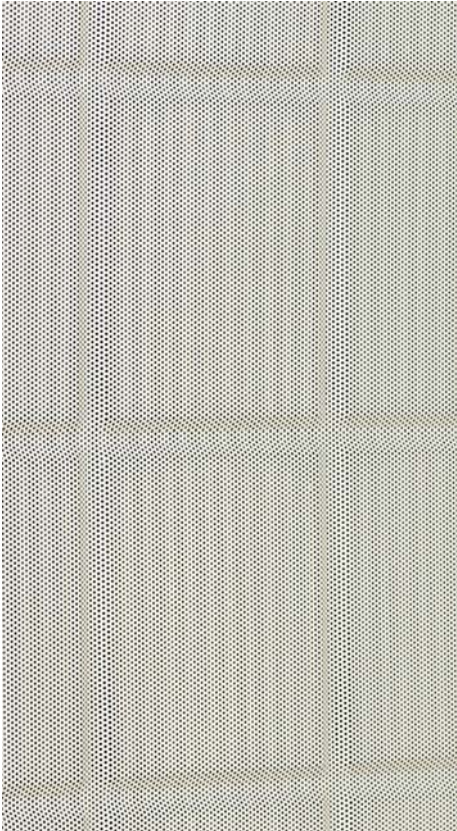
**Colour selection:** Wide selection of standard colours and material thicknesses.



MTH Concertto Acusto performs well as a space dividing solution in interior design.



MTH Concertto Acusto is also available as a structured MTH Concertto Vivo product.



MTH Concertto Acusto product sheet made of PVDF coated steel with sound-insulation felt.



Innovative steel solutions

**METEHE OY**

**www.metehe.com**

Voimakaaari 17 | 54100 Joutseno | FINLAND

Tel. +358 20 7639 640 | Fax. +358 20 7639 650 | myynti@metehe.fi

**www.concertto.com**