

Colorcoat® SDP 35

Robust pre-finished steel for roof and wall cladding

Colorcoat® SDP 35 is a pre-finished steel product suitable for building envelope applications.

- Smooth or lightly textured 35µm coating for improved robustness.
- Galvanised substrate produced to EN 10346:2009 with a Zinc metallic coating offering very good corrosion resistance.
- Available in a wide range of colours with good colour retention.
- High performance reverse side backing coat specifically formulated for construction applications.

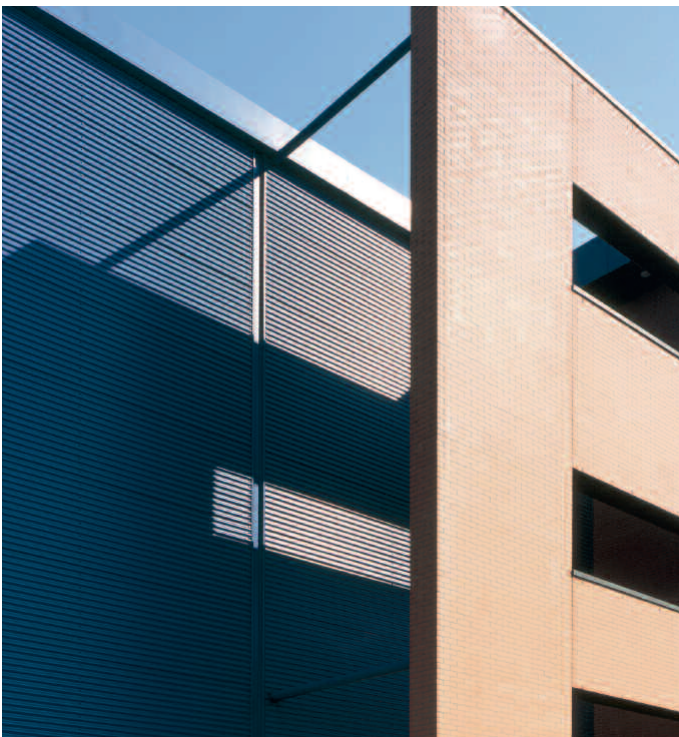
Colorcoat® reassurance

The Colorcoat® brand provides the recognised mark of quality and expertise from Tata Steel. Encompassing almost fifty years of innovation, strict testing procedures and manufacturing excellence, Colorcoat® provides a range of pre-finished steel products which have been used on countless projects worldwide.

Tailored solutions

For any customised requirements, MyriaPlus® can meet your needs with shorter lead times, flexible quantities and further processing.

For further information, please visit www.myriadservice.com



Colorcoat® SDP 35

Product performance

Colorcoat® SDP 35 is carefully manufactured in a controlled process to ensure consistent quality. Colorcoat® SDP 35 is suitable for roof and wall cladding systems.

Colorcoat® SDP 35 is available in different textures and increased flexibility. Double sided and low gloss options are offered.

Tata Steel has a range of Colorcoat® products suitable for different environments and applications.

Guarantee period

A fit for purpose guarantee is available. The actual duration of the guarantee will depend on the environment, geographic location and application.

Product testing

To ensure the integrity of Colorcoat® products, Tata Steel uses laboratory tests to measure their performance against corrosion, effect of sunlight, chemicals and abrasion. All testing of products is carried out in accredited laboratories to international standards.

Typical properties

Colorcoat® SDP 35			Test standard
Nominal organic coating thickness	µm	35	EN 13523 - 1
Specular gloss (60°)	%	20 - 40	EN 13523 - 2
Scratch resistance	g	> 3000	EN 13523 - 12
Abrasion resistance (Taber, 250 rev, 1kg, CS10 wheels)	mg	< 20	EN 13523 - 16
Flexibility: Minimum bend radius	T	≤ 1.5T	EN 13523 - 7
Adhesion	T	≤ 1T	EN 13523 - 7
Corrosion resistance: Salt spray	hours	500	EN 13523 - 8
Humidity	hours	1000	EN 13523 - 26
Corrosion resistance category		RC4	EN 10169:2010
UV resistance category		Ruv4	EN 10169:2010
Reaction to fire classification		A1	EN 13501 - 1

General notes

1. The figures contained in this table are typical properties and do not constitute a specification. For details on test methods see www.colorcoat-online.com
2. To meet the corrosion resistance properties, a Zinc weight of Z 275g/m² applies. On request Z 225g/m² can apply as a minimum coating weight.

Contact details

www.colorcoat-online.com

Trademarks of Tata Steel UK Limited

Colorcoat and MyriaPlus are registered trademarks of Tata Steel UK Limited.

Care has been taken to ensure that the contents of this publication are accurate, but Tata Steel Europe Limited and its subsidiaries, (including Tata Steel UK Limited), do not accept responsibility or liability for errors or information that is found to be misleading. Suggestions for, or descriptions of, the end use or application of products or methods of working are for information only and Tata Steel Europe Limited and its subsidiaries accept no liability in respect thereof.

Before using products or services supplied or manufactured by Tata Steel Europe Limited and its subsidiaries, customers should satisfy themselves as to their suitability.